



SPA

DESIGN & BUILD

---

TRADE

---



# LET'S WORK TOGETHER

Let's find out how to work together and create something special

## Contents

About Us	04
What We Do	06
Why Choose GRP?	08
Drawings & Renders	10
Delivery & Installation	12
Warranty	13
Products	14
Swimming Pools	14
Freeboard/Skimmer Spas	16
Deck Level/Overflow Spas	18
Infinity Pools & Spas	20
Hydropools/Vitality Spas	22
SwimSpas	24
Plunge Pools	26
Balance Tanks	28
Control Panels	29
Additional Features	30
Tiles	32
Automatic Safety Covers	34
Automatic Slatted Pool Covers	36





# About Us

Spa Design & Build is a company specializing in all aspects of spa, pool and wellness installations. Our time served, highly motivated team manufacture varying products for over 70 projects each year for both residential and commercial properties, making us one of the leading suppliers in this sector.

We fabricate all of our bespoke products from highly durable, quality materials, in our custom 12,000 sq ft factory in the North West of England, UK. We produce our very own feature-rich control units, placing us at the forefront of the pool, spa and wellness installations sector.





# What We Do

Spa Design & Build are market leaders in the design and manufacture of fibreglass tiled pools and spas. Working from our 12,000 sq ft manufacturing facility in the North West of England, UK, we distribute our quality products to trade clients at land and sea, in the UK and abroad.

All our products are manufactured uniquely to your exacting requirements providing durability, teamed with aesthetical perfection. With vast in-house manufacture, tiling, electrical and plumbing experience, we have realised some of the UK's, overseas and marine industries most stunning projects within the pool and spa trade. Using only market leading materials and highly experienced tradesmen, our products ooze professional craftsmanship.

All of our products come white labelled so you as traders can focus your time on the closure of the sale. Ordering from us means that you will have peace of mind that the products are competitively priced and will meet your deadlines. Your company logo will be printed on all paperwork and drawings, which will be ready for viewing by your client the minute it arrives.





# Why Choose GRP?

The benefits of choosing a fiberglass (GRP) tiled pool or spa can far outweigh the more traditional methods such as concrete due to speed of construction, reduced costs and greater access to all fittings, pipework and electrics.

Choosing GRP over concrete for the build of your pool or spa provides many benefits including; reduced cost, reduced installation time, increased speed of construction and reducing overall project cost. GRP comes with the same warranties as concrete (this is an enhanced not inferior product to that of concrete), greater access to fittings so less downtime if any failures occur (key for commercial businesses), exacting programme dates as built in factory conditions not open air sites where weather can affect programme, high quality of finish with QMS control, pre-water testing prior to delivery so no onsite water / leakage issues and more bespoke creativity in design.

Our products can be installed in as little as one day, ready for field pipe/plant connections. Once you have chosen your prefabricated, tiled pool or spa, there are an endless list of additions that can be included. Spa Design & Build offer an extensive range of additional features such as pool covers, water features, air and water jets, both white and colour changing lights (mini, midi and large) and much more.

One benefit of opting for a factory manufactured product is that you can view your product at all stages of manufacture and witness the QMS control of each stage being approved and signed off by our manufacturing manager, ensuring quality in both the aesthetics and structure integrity of the product.

We provide our clients with the opportunity to be a part of the process during the product pre stage. This allows our customers to create bespoke products that suit their individual requirements. Product features can be personalized, enabling clients to choose exacting positions of air jets, water jets, massage features, lights, and defining tiles. This gives the client total control over the design and most importantly, the comfort of knowing where the product is up to in the manufacturing process, while witnessing the quality of its finish first hand.

600 x 150 x 20mm Top Edge Coping Stone

4mm Mosaic Tile with Chosen Epoxy Grout

3mm Two-part Epoxy Adhesive

2mm Gel Coat

3mm First Layer GRP

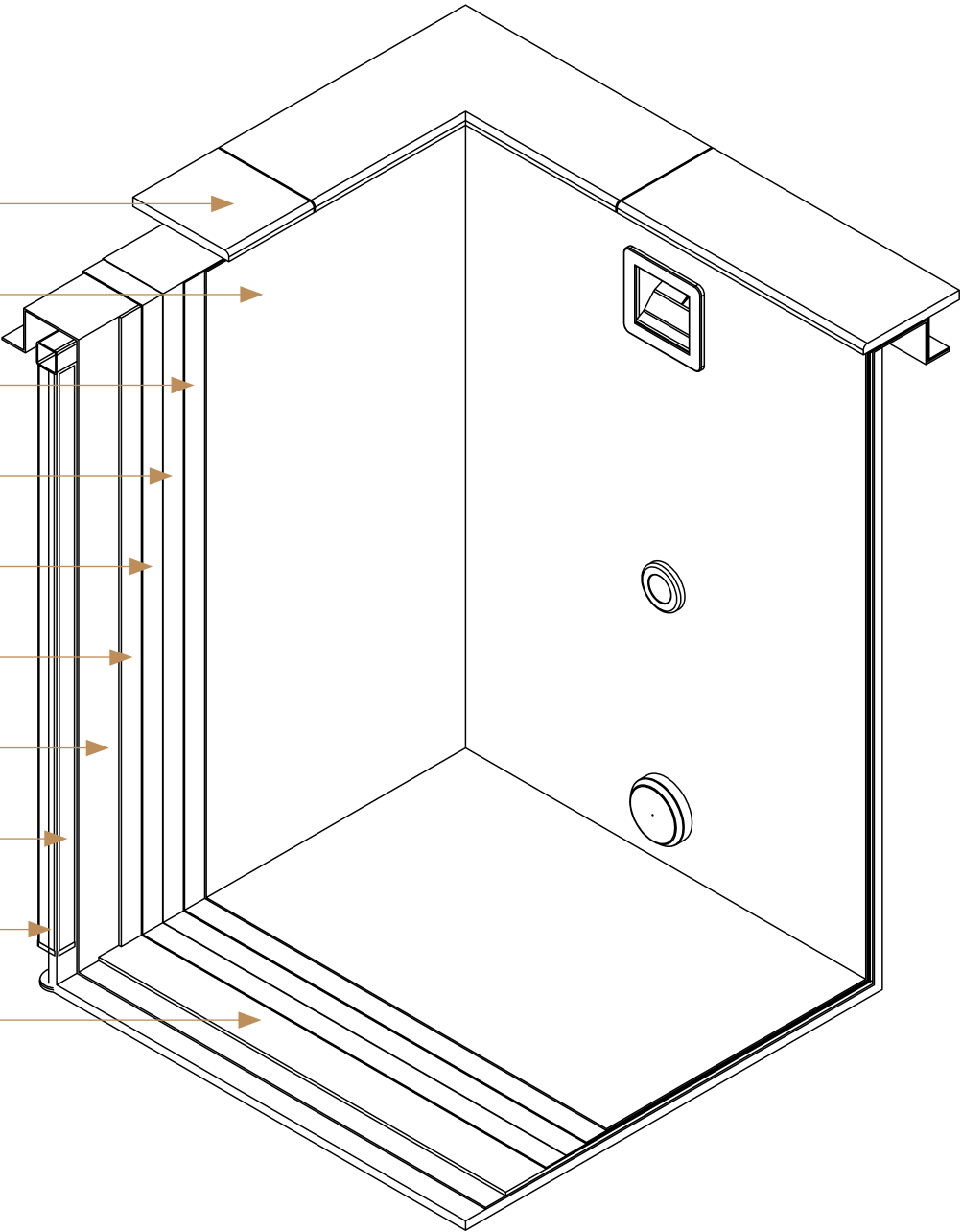
6mm Wall Coring Layer

4mm Structural Main Layer GRP

Foam Insulation Thickness to Suit Project Setup

50 x 50mm 304 Stainless Steel Adjustable Leg

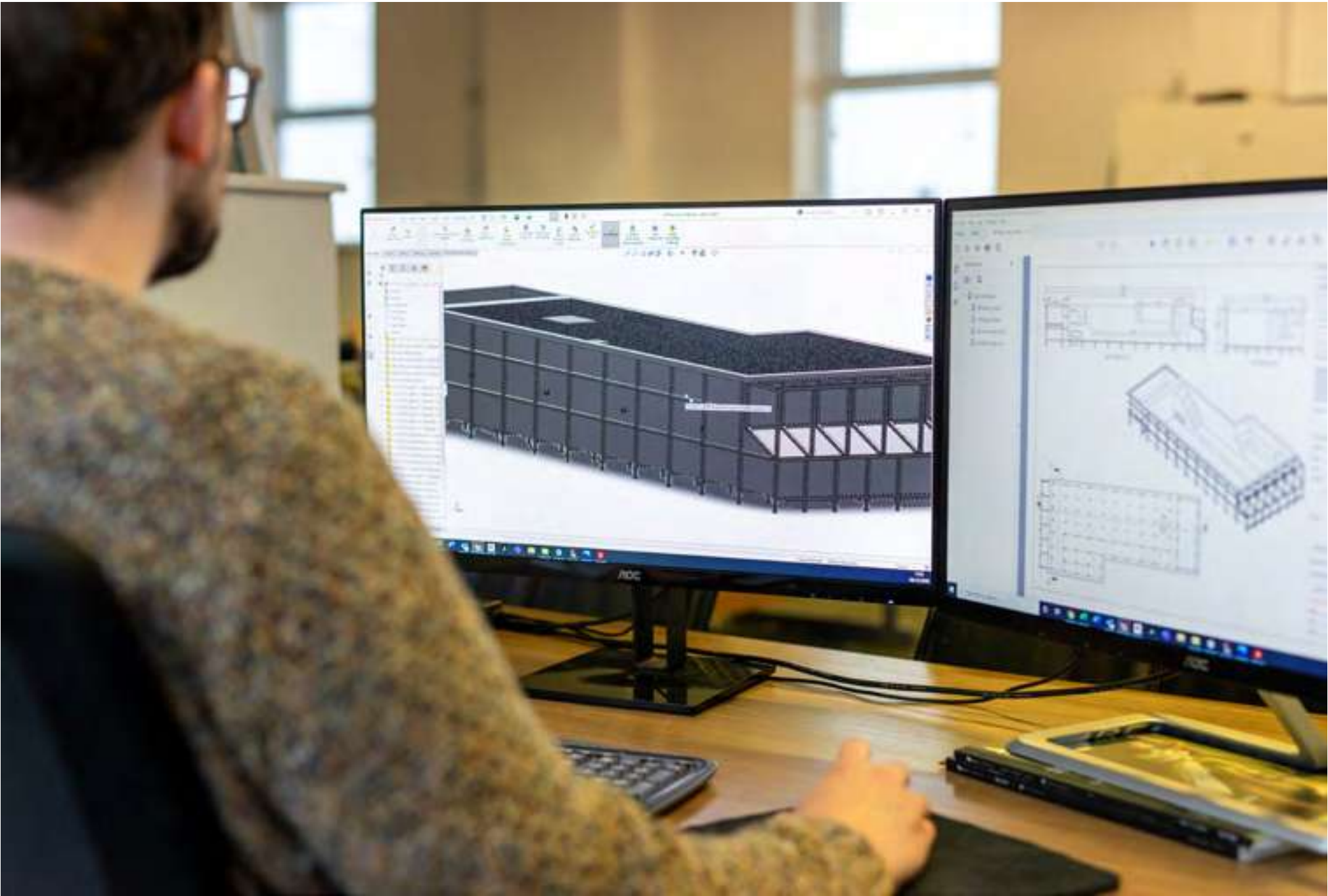
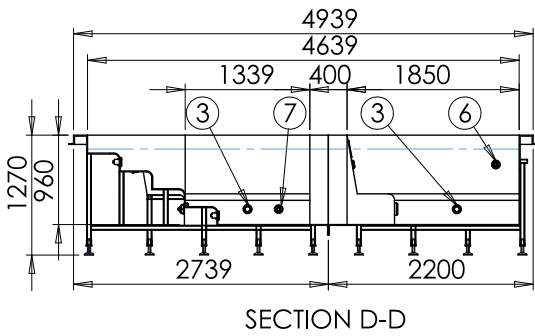
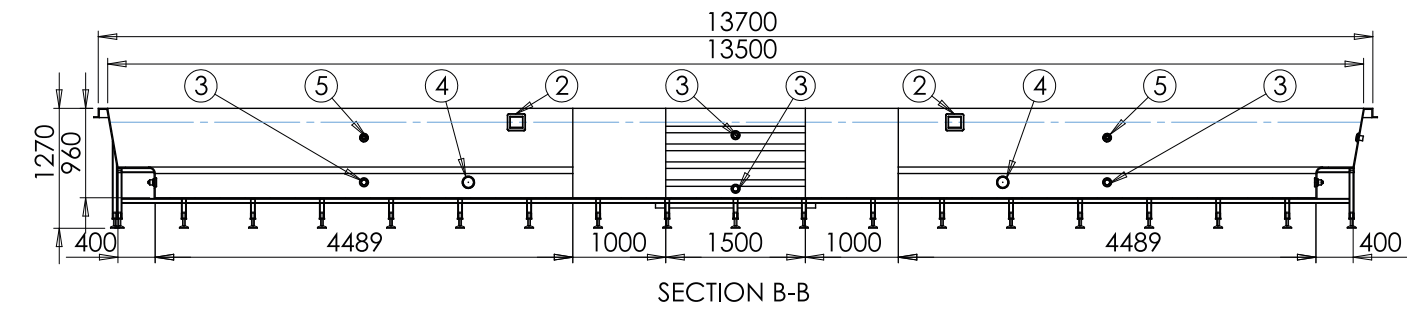
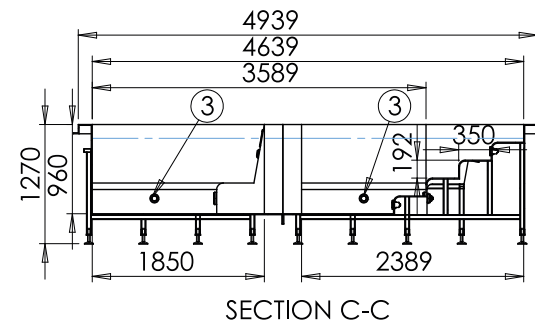
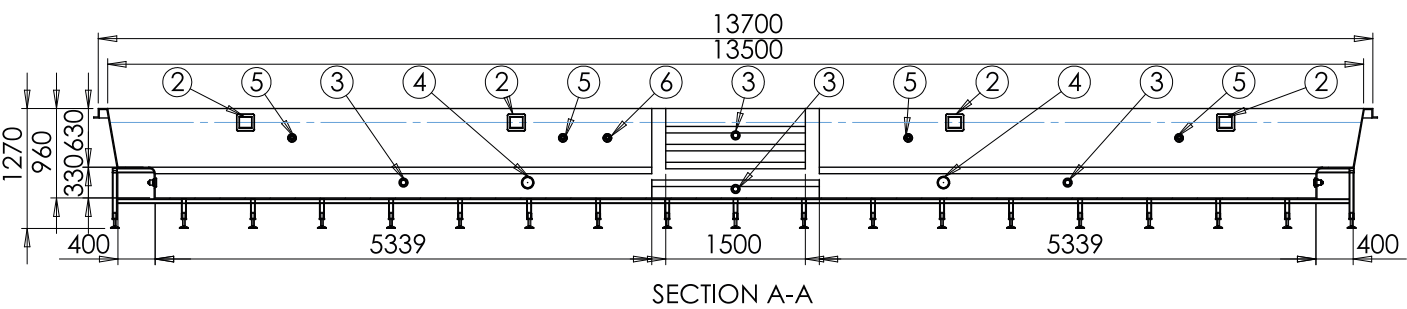
8mm Structural Floor Coring Layer



# Drawings & Renders

Here at Spa Design and Build, upon receiving your request for a quotation, our sales team aim to return your quote within 24 hours. Every quotation will include an associated drawing from our design team.

If you would like a rendered drawing to share with your client to give them a better feel and understanding of the product, our team can help with this too. Further assistance can be provided for builders works and service detail to assist overall projects, should this be required. Our technical team have a vast amount of knowledge and can help where need to speed up deliverance and the completion of your project.





# Delivery & Installation

At Spa Design & Build, our team can assist with the delivery of your product when requested. A senior engineer can visit site, wearing your company high-vis if requested, and carry out a survey to ensure all logistical information is obtained.

Correspondence with the transport company can be handled by our team to ease your workload. We can advise on the type of vehicle needed, the best way to transport your product, and even make a tilt frame should your product require it.

If your product is required to be manufactured in multiple sections due to access restrictions on site, our team of highly skilled tilers and plumbers will complete the join once the product is in position, ready for you to commission.



# Warranty

*All our products come with the following warranty:*

- GRP shell - 10 years
- Tiling joint point (gel dot) or large format - 3 years
- Cord backed (thinner mesh/approved) - 1 year
- Paper-faced mosaic - 1 year
- Thick mesh back mosaics - No warranty
- Plumbing - 2 years
- Electrical - 1 years





# Swimming Pools

Spa Design & Build offer bespoke design for all manner of pools and spas. Dependant on your clients needs, we can incorporate water features such as water curtains, water cannons, air and water jets. Automatic covers and upgraded grating can also be incorporated into the design.

Spas and pools can be split into multiple sections if needed, making it easier to transport and position on site if access is limited. Once onsite, the sections are joined together and one of Spa Design & Build’s experienced engineering teams will tile over the connecting join and complete any final plumbing and electrical works.

## Available as Fully Accessible or Backfilled

All products can be designed to be fully accessible or to sit in a bund tank should a more value engineered project be required.



Fully Accessible



Fully Accessible



Backfilled

## Standard Sizes

### 3m Wide Pool

5m | 6m | 7m | 8m Length

### 3.8m Wide Pool

5m | 6m | 7m | 8m | 9m  
10m | 11m | 12m Length

### 4.5m Wide Pool

10m | 11m | 12m Length

### 5m Wide Pool

10m | 11m Length





# Freeboard / Skimmer Spas

In a Freeboard or Skimmer Spa, the water sits beneath the top edge of the spa or pool. This makes it a particularly good option for residential projects.



## Standard Sizes

### Round Skimmer

2.00m | 2.20m | 2.40m

### Square Skimmer

2.00m | 2.20m | 2.40m | 2.50m

### Square Skimmer with Corner Step

2.00m | 2.20m

### Rectangular Skimmer Lounger

2.20m x 1.80m

### Octagon Skimmer

2.25m

### Oval Skimmer

2.50m x 2.00m | 3.00m x 2.00m





# Deck Level/ Overflow Spas

In a Deck Level/Overflow spa, the water overflows the top edge of the spa into a surrounding channel. This water is then collected in a balance tank, filtered, and returned to the spa to replace the displaced water. Deck Level/Overflow spas are ideal for commercial use.



## Standard Sizes

### Round Deck Level

2.00m | 2.45m | 2.50m | 3.00m  
3.00m Cascading

### Square Deck Level

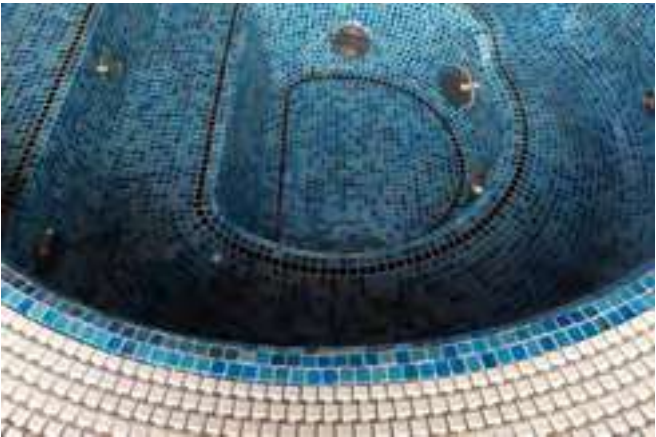
2.50m | 3.00m

### Octagon Deck Level

2.40m | 2.75m | 3.20m x 2.75m

### Oval Deck Level

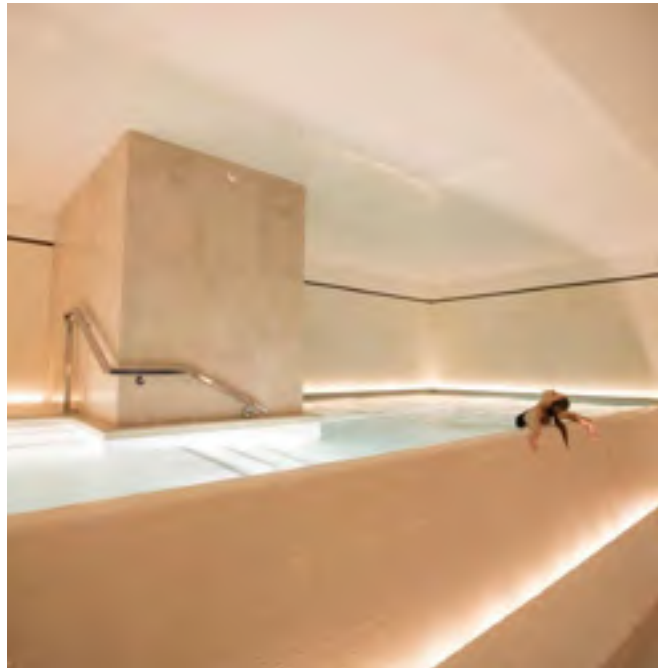
4.00m x 3.00m





# Infinity Pools & Spas

Also known as a cascading or infinity edge pool. The water cascades /waterfalls over one or all edges of the product into a lower-level channel or trough. A balance tank is required for this product.





# Hydropools / Vitality Spas

Vitality or Hydrotherapy spas are designed to be relaxing, with levels allowing for standing, sitting or lounging. They are equipped with air and water jet features and can be tailored to suite your client.



## Standard Sizes

**Lounger Spa – Rectangular**  
4.00m x 3.50m

**Vitality Spa – Rectangular**  
4.50 x 3.50m

**Vitality Spa – Rectangular**  
5.50 x 3.50m





# SwimSpas

SwimSpas can be deck level or skimmer. They use high-powered current swim jets which users can swim against continuously without the need for a full size swimming pool. SwimSpas can also be customised to have loungers and seats to create a relaxation area. The perfect pool and spa combination.



## Standard Sizes

### SwimSpa (Pill Shaped)

4.50m x 2.40m | 5.00m x 2.40m  
5.50m x 2.40m | 6.00m x 2.40m

### SwimSpa (Rectangular Shaped)

4.50m x 2.40m | 5.00m x 2.40m  
5.50m x 2.40m | 6.00m x 2.40m  
7.00m x 3.00m

### Swimmer (Rectangular Shaped)

4.50m x 2.40m | 5.00m x 2.40m





# Plunge Pools

A plunge pool is a small, typically deep pool that is usually installed in-ground, although above-ground models are available. An ideal place to cool-off after heat treatments such as a sauna or steam session or for body recovery after gym/training sessions.



## Standard Sizes

### Snail Shell Plunge Pool

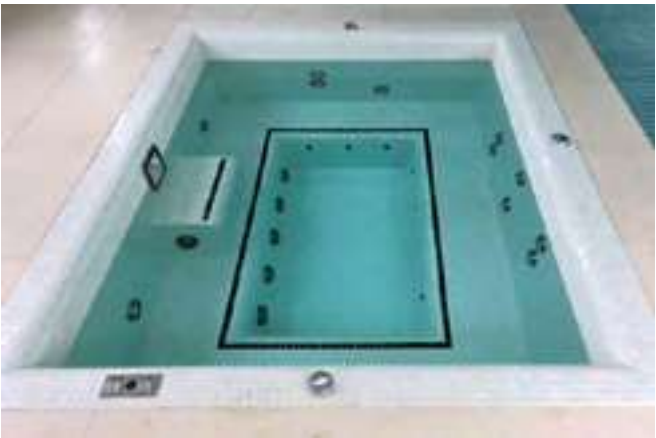
2.00m x 2.10m

### Rectangular Plunge Pool

1.80m x 1.20m

### Square Plunge Pool

1.20m





# Balance Tanks

The purpose of a balance tank is to hold the water displaced by the bather or bathers. Once the bathers leave the spa, the water held in the tank then returns to the spa.

Spa Design and Build can design and manufacture balance tanks in house. Our team can advise on the capacity your balance tank should be based on the product you have ordered.



# Control Panels

*Control panel features:*

- To satisfy residential or commercial projects
- Full company branding available upon the panel
- All control panel wiring drawings for your O&M manuals are issued prior to build
- Online and telephone support from staff with 20+ years experience
- Bespoke design and setups available to make your panel unique
- Complex panels can be created and designed collaboratively with you
- Simpler budget panels available
- Trade terms offered
- 2-week tutorial for PO





# Additional Features

Pools and spas can be personalised in several ways. We offer demarcation tiles to enhance features such as steps, seats and loungers. Modular grating used for our deck level products can be upgraded to a colour choice that better suits your clients taste and requirements.

By request, our team can customise positions of massage and air jets and to really enhance your products, we have an extensive range of water features to choose from such as water cannons and curtains.





# Tiles

Spa Design & Build have partnered with Design Works to offer a stunning range of 25mm mosaic tiles.

All quotations include the A and A+ range, offering a huge array of colours and styles for your client to chose from. For a look at our more extensive range of mosaic tiles, please request further information from our team.





# Automatic Safety Covers

Safety is naturally a concern for those buying a pool. This type of safety cover is more capable of supporting the weight of children, pets and even adults, should they accidentally walk on it. But it also has other huge advantages over competitors’ products.

Most automatic cover manufacturers use sewn webbing. With this method, the webbing often fails before the fabric does. These safety covers, however, use an exclusive, patented process to heat seal the webbing around a polymer bead and weld it to the cover in one step. This heat sealed webbing is colour matched to the fabric to create an attractive finish.

Furthermore, rather than use industry standard vinyl for the cover, which is popular with other manufacturers, these covers have the far superior Ultra Guard III vinyl composite. The high level of UV resistance offered with the Ultra Guard III will reduce the level of colour fading considerably, compared to standard vinyl, plus it offers high resistance to chlorine, acid, ozone and other pool chemicals.

The exclusive heavy duty double ball bearing pulleys have almost triple the load bearing capacity of single row pulleys used by other manufacturers. No sheer pins or bolts are used, instead the system operates with keyways to provide maximum reliability. Unlike other systems it cannot double engage causing the system to try to run in both directions at the same time, causing gears to wear and slip.

To top it all, the surrounding and connected heavy-duty frameworks and brackets are fully expandable, ensuring the most solid fixing and eliminating bent and/or broken brackets. Once the system is locked into place, it cannot move around. This safety cover is suitable for both deck mount and pit mounted installations and comes with end covers (for deck mounting) and a selection of pit coverings (for pit mounted installations).



*Due to limitations in the printing process the colours above may vary slightly and are for guidance only.*





# Automatic Slatted Pool Covers

This automatic, slatted pool cover is available for domestic and commercial pools, indoor or outdoor, and is versatile in the applications it offers.

*They are the ultimate in:*

- Heat insulation
- Evaporation control
- Durability
- Aesthetic appearance

The cover is manufactured in interlocking sections similar to a Venetian blind. Each section simulates the double glazing system, with 0.5" of interspace combining the highest degree of insulation with evaporation control.

The standard white sections are popular for indoor pools. On outdoor pools the solar slats with black bases promote high solar heat transfer. A distinct advantage this cover is that rain water will pass through the cover, and will not collect on top requiring removal by pump.

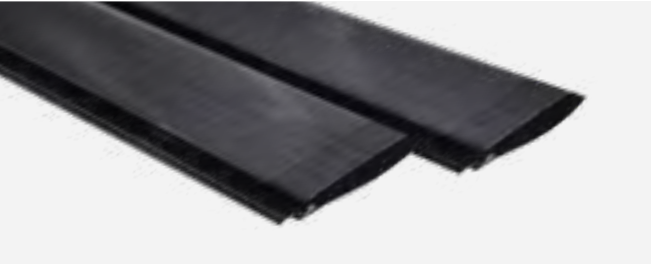
The roller is powered by a 24 volt motor, with remote operation from a touch screen control with built-in safety lock feature. All covers are manufactured specifically for individual pool requirements.

*Automatic slatted safety cover features:*

- Reduces evaporation & heat loss
- Enhances the safety of the pool – safety lock available
- Minimises pool debris
- Concealed stainless steel motor driven spindle
- PVC, Polycarbonate & Foam filled slats available
- Made to measure
- In-roller motor or external motor

*In roller motor system:*

- No separate motor pit required
- High pressure motor vessel filled with nitrogen
- Built-in pressure sensor
- Formula 1 shock absorber seal technology
- Larger motor available for larger covers
- Simple electronic calibration
- Simple to exchange motor unit
- Simple installation for existing pools
- No risk of flooded motors



Volcano Grey



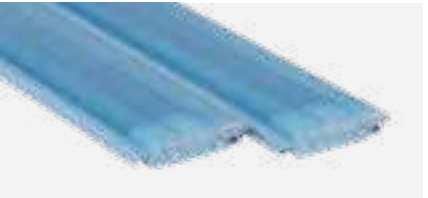
Transparent



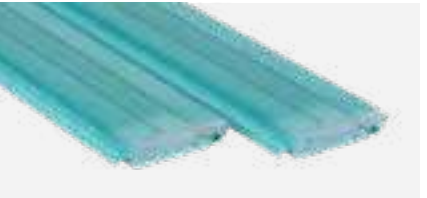
Alu-look



Blue



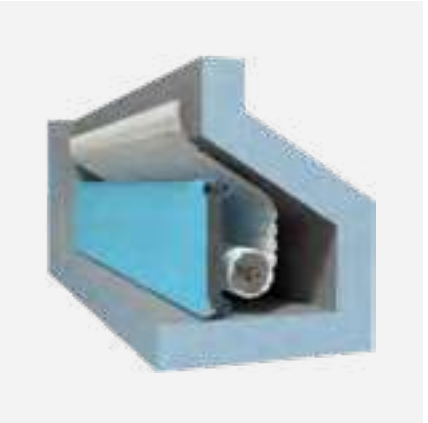
Ocean



Lagoon



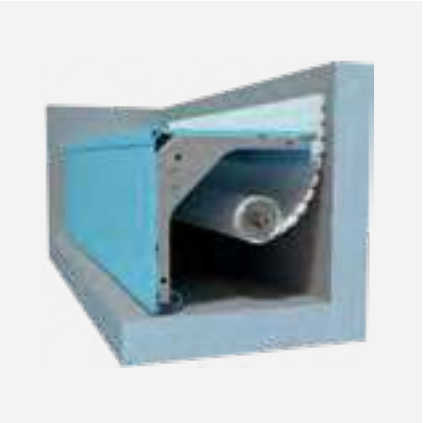
Crystal Clear



Cave with front panel



Below ground in pit & cantilever pit brackets



In-pool bench







# SPA

DESIGN & BUILD

---

TRADE

---

Spa Design & Build | Unit 8 | West Float | Wallasey | Wirral | CH41 1AE | UK

+44 (0) 151 372 1900 | [trade@spadesignandbuild.com](mailto:trade@spadesignandbuild.com)

[www.spadesignandbuild.com](http://www.spadesignandbuild.com)